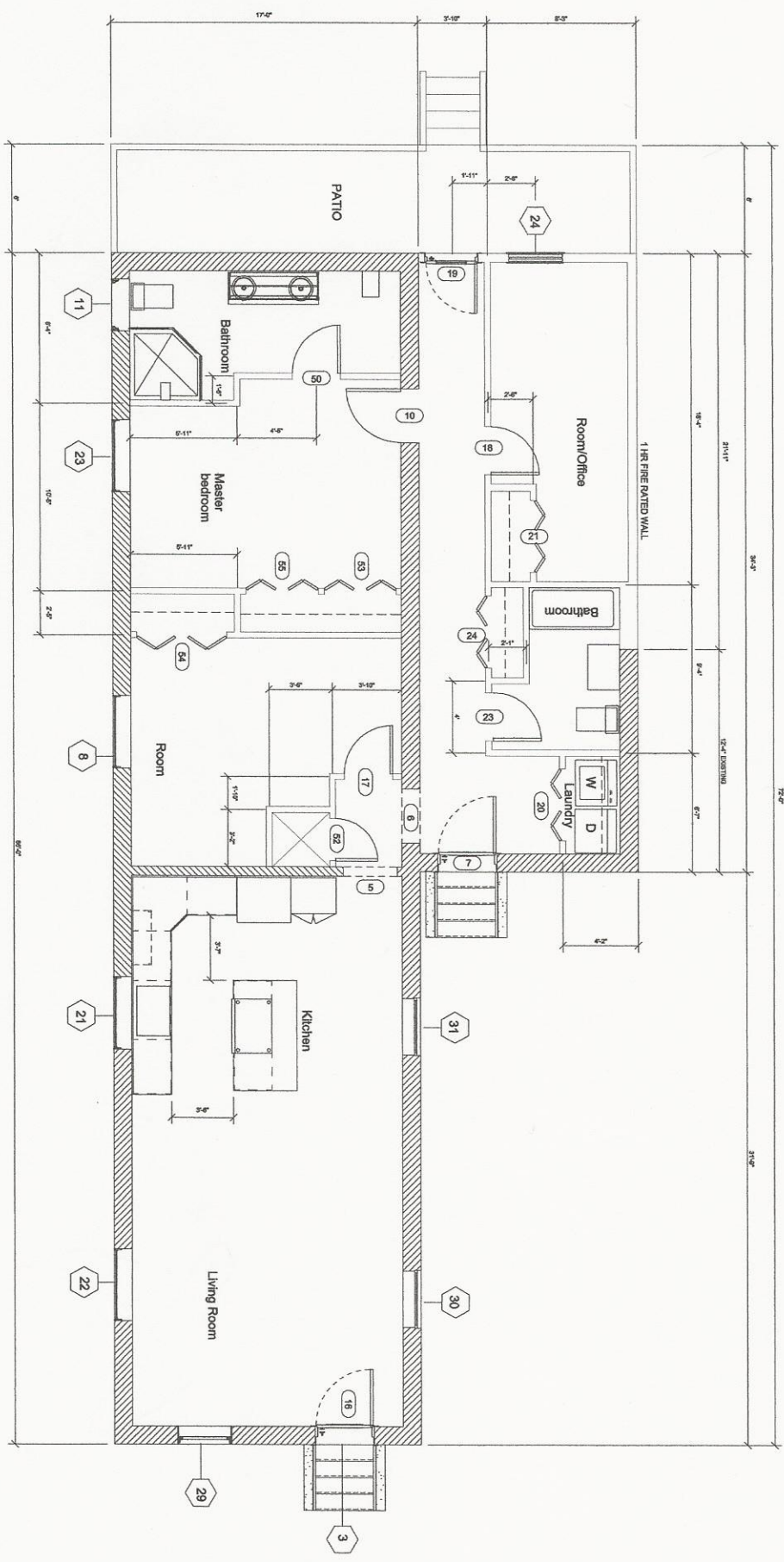


Delphen's Home Plans is not responsible for any modifications made to these plans. The contractor is responsible for any errors or omissions in the drawings. Any expense incurred due to any error or omission is the responsibility of the contractor or owner to correct the error and/or omission. Any expense incurred due to any error or omission is the responsibility of the contractor or owner to correct the error and/or omission.



FLOOR PLAN
SCALE: 1/4"=1'-0"

Mark	Description	Width	Height	Comments
5	OPENING	3'-0"	7'-0"	
6	VICTORIAN WOODEN DOOR	3'-0"	7'-0"	
7	VICTORIAN WOODEN DOOR	3'-3 11/32"	7'-2"	
10	SINGLE PANEL DOOR	3'-0"	7'-0"	
18	VICTORIAN WOODEN DOOR	2'-3 11/32"	7'-2"	
19	SINGLE PANEL DOOR	2'-8"	7'-0"	
17	SINGLE PANEL DOOR	2'-8"	7'-0"	
16	VICTORIAN WOODEN DOOR	4'-0"	7'-0"	
20	BI-FOLD DOOR	4'-0"	7'-0"	
21	BI-FOLD DOOR	4'-0"	7'-0"	
24	SINGLE PANEL DOOR	2'-0"	7'-0"	
23	SINGLE PANEL DOOR	4'-0"	7'-0"	
60	SINGLE PANEL DOOR	2'-8"	7'-0"	
62	AC CASET DOOR	2'-8"	5'-0"	
63	BI-FOLD DOOR	4'-0"	7'-0"	
64	BI-FOLD DOOR	4'-0"	7'-0"	
65	BI-FOLD DOOR	4'-0"	7'-0"	

Mark	Description	Height	Width	Comments
3	Tansom Window	2'-0"	3'-7"	Windows are staying
8	Out-Swing French - Tansom Unit	1'-10 1/4"	4'-0"	Windows are staying
11	Casement - Tansom Unit	1'-8 3/4"	2'-10 1/2"	Windows are staying
21	Out-Swing French - Tansom Unit	1'-10 1/4"	4'-0"	Windows are staying
22	Out-Swing French - Tansom Unit	1'-10 1/4"	4'-0"	Windows are staying
23	Out-Swing French - Tansom Unit	1'-10 1/4"	4'-0"	Windows are staying
24	Weather Shield Premium series Double Hung Window	5'-0"	3'-0"	Windows are staying
29	Double-Hung - Contemporary Slant Vent Units	5'-9 1/2"	3'-0"	Windows are staying
30	Weather Shield Premium series Double Hung Window	8'-0"	3'-4"	Windows are staying
31	Weather Shield Premium series Double Hung Window	8'-0"	3'-4"	Windows are staying



SQUARE FOOTAGE PER UNIT	
EXISTING LIVING	1270 SQ. FT.
NEW LIVING	285 SQ. FT.
REAR PORCH	178 SQ. FT.
FRONT PORCHES	30 SQ. FT.
TOTAL	1653 / 1740 SQ. FT.

ORIGINALS REVISED BY DELPHEN'S DRAFTING 08/18/2014

"BY WISDOM A HOUSE IS BUILT,
AND BY UNDERSTANDING IT IS ESTABLISHED.
AND BY KNOWLEDGE THE ROOMS ARE FILLED
WITH ALL THE PRECIOUS AND PLEASANT RICHES."
PROVERBS 24:3-4

CONTRACTOR:
ELITE CONSTRUCTION SERVICES
AND MANAGEMENT GROUP
MR. PAUL IRONS
NEW ORLEANS, LOUISIANA 70119
CELL: 504-321-6773
OFFICE: 504-321-1517
FAX: 504-321-1517
EMAIL: piron@eliteconstructionservices.org

DELPHEN'S HOME PLANS SPECIALIZING IN Louisiana
5515 SPRING WATER BATON ROUGE, LA 70817 PHONE# (225) 756-2686 STYLE HOMES.

drawings for:
MR. PAUL IRONS
2407 ORLEANS
ORLEANS PARISH, LA

SCALE: 1/4"=1'
DRAWN BY:
GENE GAYLE

08/18/14
A2